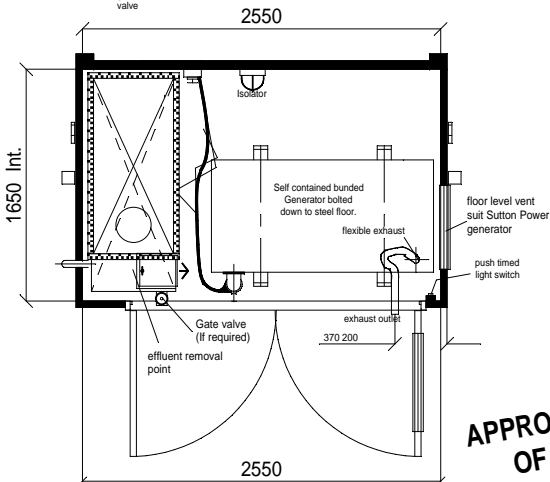
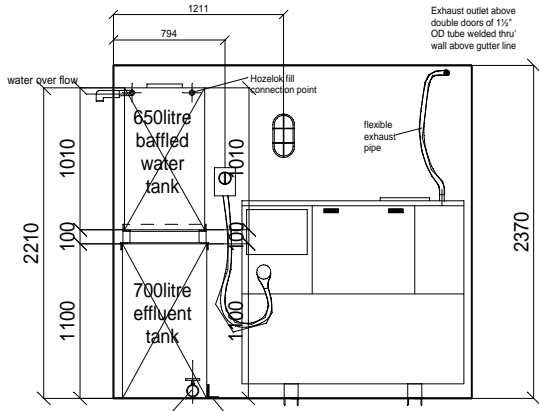
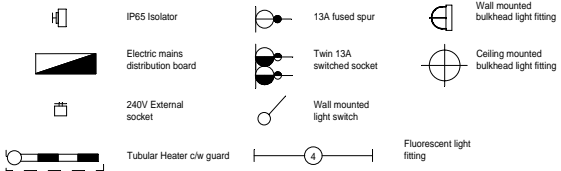


650litre insulated Water tank to have electronic float switch with water low level warning light adjacent to control panel, hozelok fill connection point with ballcock cut off on full



APPROVED LAYOUT OF DRAWING

Signed.....
Position.....
Date.....

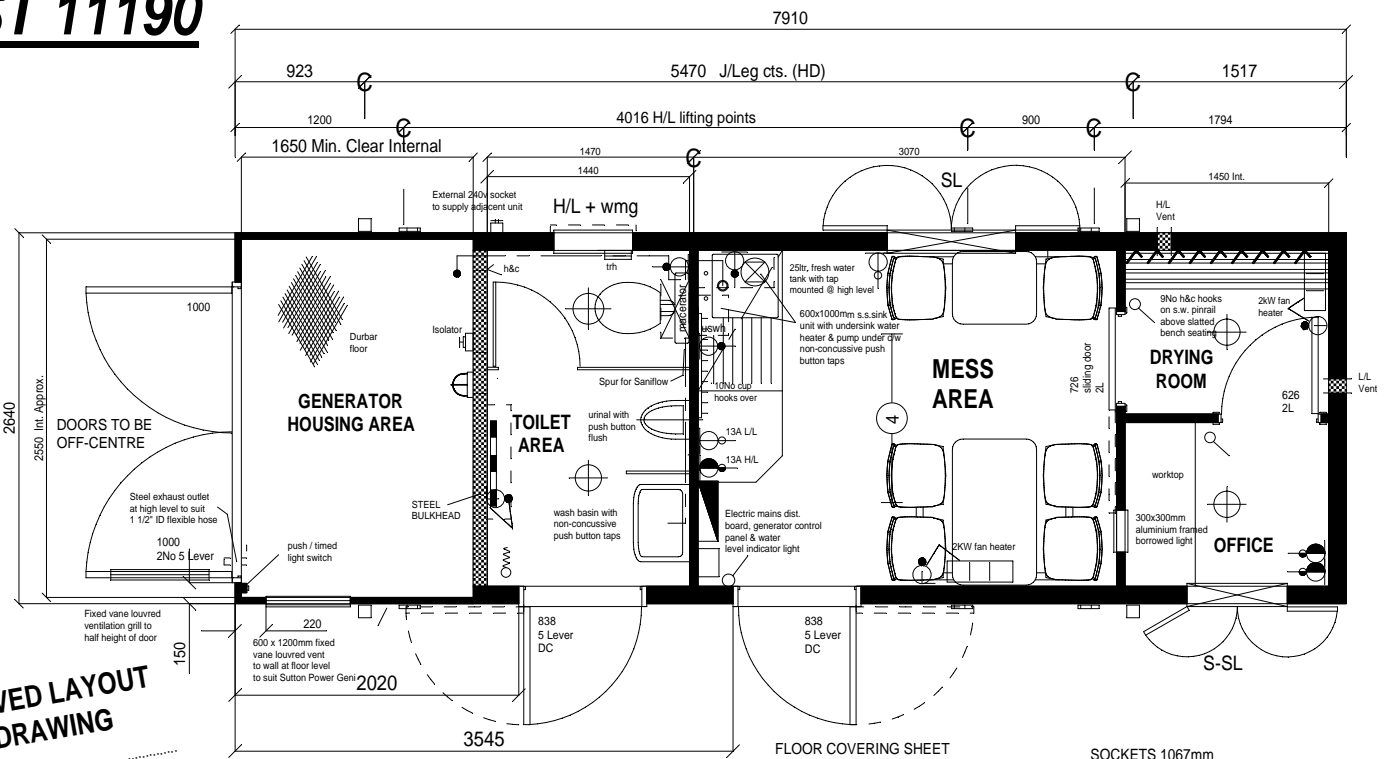


ST 11190

Colours :

- Main Body - 18 E 53 GENTIAN BLUE
- Fascia - 18 E 53 GENTIAN BLUE
- Corners - 18 E 53 GENTIAN BLUE
- Legs - 18 E 53 GENTIAN BLUE
- Personnel Doors - 18 E 53 GENTIAN BLUE
- Geni. Housing Doors - 18 E 53 GENTIAN BLUE

CEILING HEIGHT - 2235mm
EXTERNAL - 1.6mm 2 CORRY STEEL, WITH PAINT FINISH.
INTERNAL - EGB52 TO WALLS, CEILINGS TO BE WHITE PLASTERBOARD.
WINDOWS - ALUMINIUM FRAMED SINGLE GLAZED SL - 914 x 914mm SLIDING WINDOW, FITTED WITH SIDE HUNG STEEL SHUTTERS LOCKABLE FROM INSIDE FITTED WITH HOLD OPEN CATCHES.
SL - 700 x 914mm SLIDING WINDOW WITH SHUTTER AS ABOVE.
H/L - 560x300mm FULLY OPENING, OBSCURE c/w WELDMESH GUARD OVER.
DOOR - STEEL c/w 5 LEVER LOCK.
INSULATION - 60mm TO WALLS & ROOF.



PLAN LAYOUT

FLOOR COVERING SHEET VINYL COL. GREY.

SKIRT & COVE - BROWN PLASTIC

SOCKETS 1067mm ABOVE FFL. UOS.
WINDOW CILL 1000mm ABOVE FFL.

CARTER CABIN HIRE LTD.

TEL. 01553 810778
FAX. 01553 810793

Client
Title 26' x 9' HIRE SPEC. STAND ALONE SECURE STEEL WELFARE UNIT - PLAN LAYOUT

Revisions	
A: COLOURS AMENDED 30/05/07 PJB	

ORIGINAL DRAWING 14662 - 1
ORIGINAL DRAWING PAPER A2

DRAWN	PJB
SCALE	1 : 25
DATE	24 / 10 / 07
DRG No.	St 11190